



**Hyperponic**  
The Future Of Indoor Agriculture.

Technology-Driven, Medical Grade  
Cannabis & Hemp Grow System.





# The CropTower<sup>®</sup>

Our vertical aeroponic grow system

Powered by exclusive and patent-pending technology

## Each CropTower<sup>®</sup>:

- 10' Tall and grows 102 plants in 81 sq ft
- 360° full spectrum LED lighting
- Produces 180 lbs of dried bud per year
- Generates \$70K in annual revenue

## 100 CropTower<sup>®</sup> System:

- Housed in 15,000 sq ft
- Produces 18,000 lbs of dried bud per year
- Generates \$7M in annual revenue





# Total Turnkey System



TECHNOLOGY  
Proprietary

BUDET  
Cleaning System

HARVESTABLE  
ROOTS  
Valuable

**CROPTOWERS**  
**10' 102 plants**

NUTRIENT DELIVERY  
Automated Watering

MOTHER/CLONE/VEG  
Included Systems

## What We Do

Provide growers a turn-key solution of the CropTower<sup>®</sup> System and ongoing managed services to ensure a successful grow.

- Lease Equipment/Services Leased, Not Sold
- Monthly Recurring Revenue Model
- Scalable and Replicable
- 80% Margin (\$75/lb Cost, \$390/lb Revenue)
- Production 3x Inside; up to 100x vs outside
- We DON'T Touch The Plants!



# The Solution

## Driving Efficiency Through Technology:

- Reduce Labor, Water And Power
- Automate Processes and Procedures
- Monitor & Manage in Real Time

## Industry-Changing Infrastructure:

- Maximize Space & Increase Yield/Revenue
- Eco-Engineered Recycled Water & LEDs
- 360 Degree Plant Lighting
- Pharmaceutical-Grade Environment





# The Technology

**Manages and Monitors The Grow:**

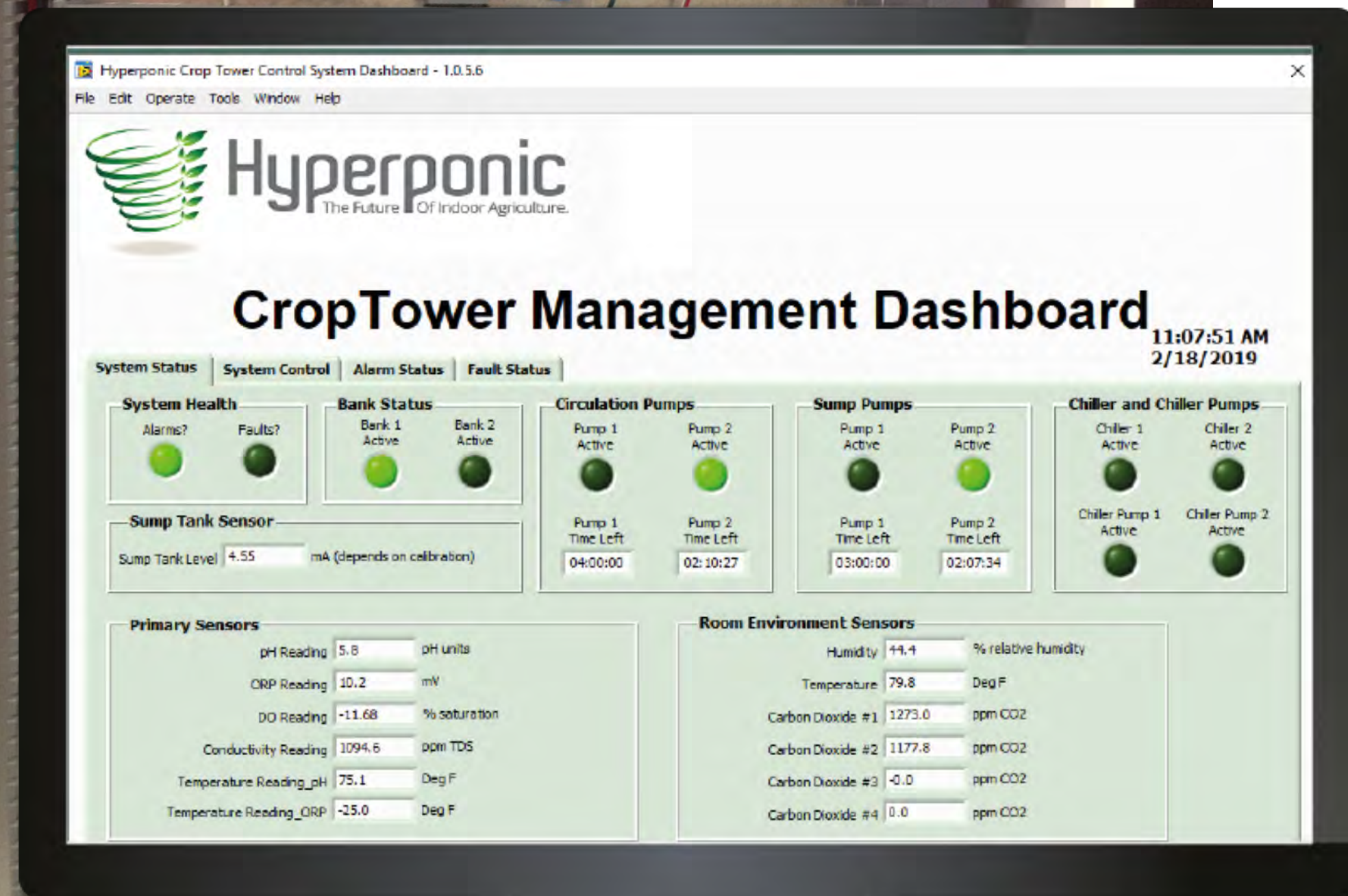
**Atmosphere:** CO<sup>2</sup>, Humidity, Temperature

**Water:** Nutrient Levels, O<sup>2</sup>, Temperature, Ph, Salinity

**Lights:** Timing, Sunrise/Sunset, Brightness,

**Systems:** Pumps/Water Flow, Leaks, Surveillance

Room Movement, Doors





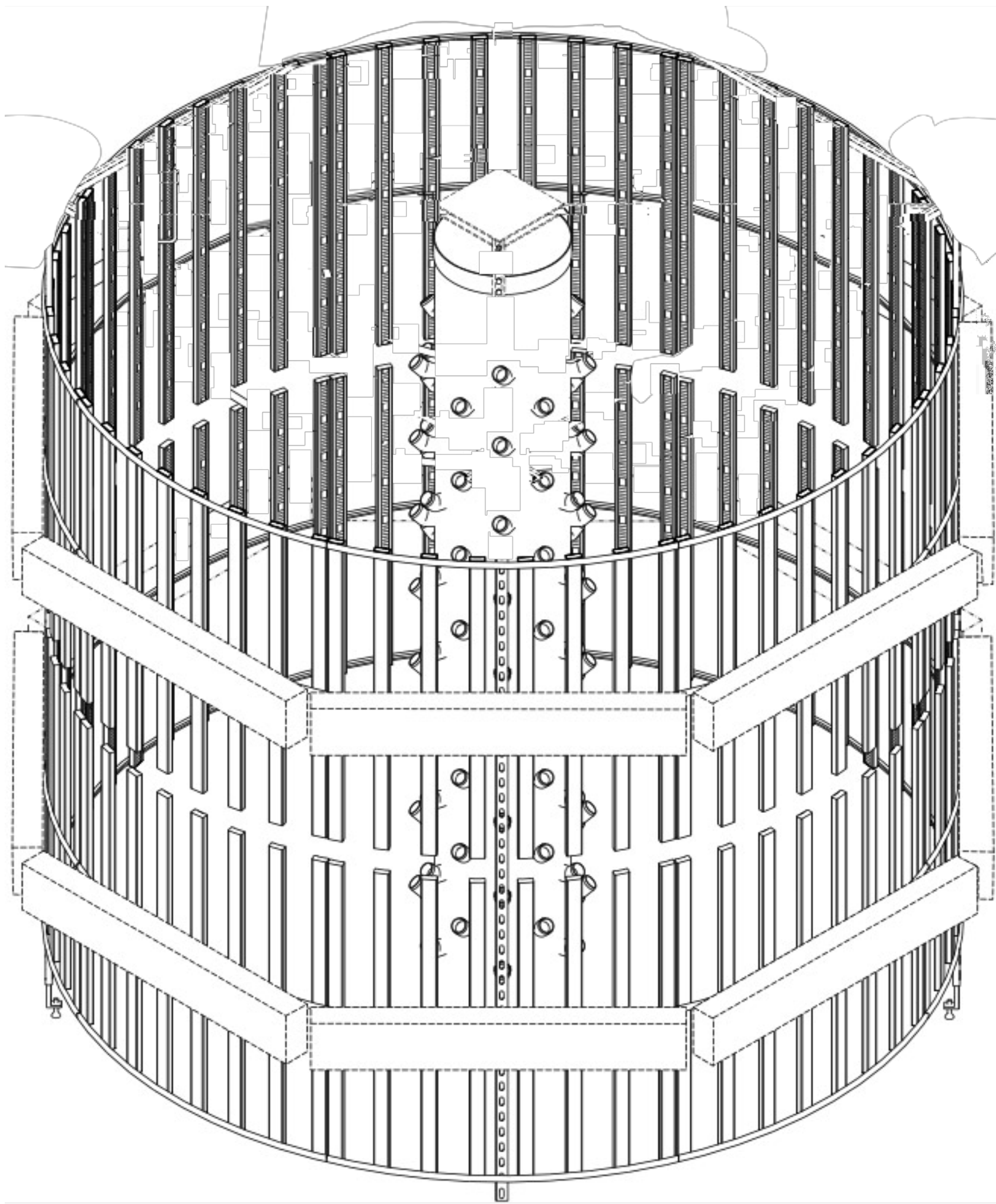
# Intellectual Property

## Filed

1. Patent- US- Single patent for the total system
2. Patent- Canada, EU, China- International Provisional
3. Trademarks- Hyperponic, Hypergrown
4. Copyrights- CropTower, Budet

## Filing March 2019 (Individual Sub-Patents)

1. “Aquaduct” - Water Delivery Disc
2. “Budet” CropTower<sup>©</sup> Sanitizing Device
3. Lighting Structure & Mechanism





## Head To Head Revenue Comparison In 20K Sq Ft

\*(Net Income in millions of dollars)



# Grower Benefits

## Annual Revenue Same Space Comparison

100 CropTower<sup>®</sup> System = \$24M

Horizontal grower = \$7.7M

- 3x More Production
- 95% Less Water Usage
- 50% Less Labor Costs
- 25% Faster Clone To Harvest
- \$0 Installation Costs

# Differentiators

## Competitors



## Product Summary

- Horizontal Grow
- Mistlers That Clog
- Concept Only
- Residential
- Standalone Towers
- Hard To Maintain
- No Lighting Included
- Tray Grown
- Mistlers That Clog
- Sell Their System
- No On-Site Staff

## Hyperponic

- Hyperponic has the most, and only, comprehensive solution on the market today.
- No other system produces the volume of high quality cannabis in the same square footage than our CropTower<sup>©</sup> grow system.



# Management Team



**Doug Fyvolent**  
CEO, Founder



**Philippe Derathe**  
Operations



**Jeff Perlman**  
Board Member



**Art Fyvolent**  
Marketing



**Jen Kearney**  
Technology



**Gerry David**  
Board Member



# Deal Flow- CBD/THC

## Letters of Intent

- 100 Towers - Greece
- 100 Towers - No. Carolina

## Pending Contracts

- 100 Towers - Oklahoma
- 40 Towers - Michigan

## Wholesale Distribution

- Beverage - Florida





# Funding

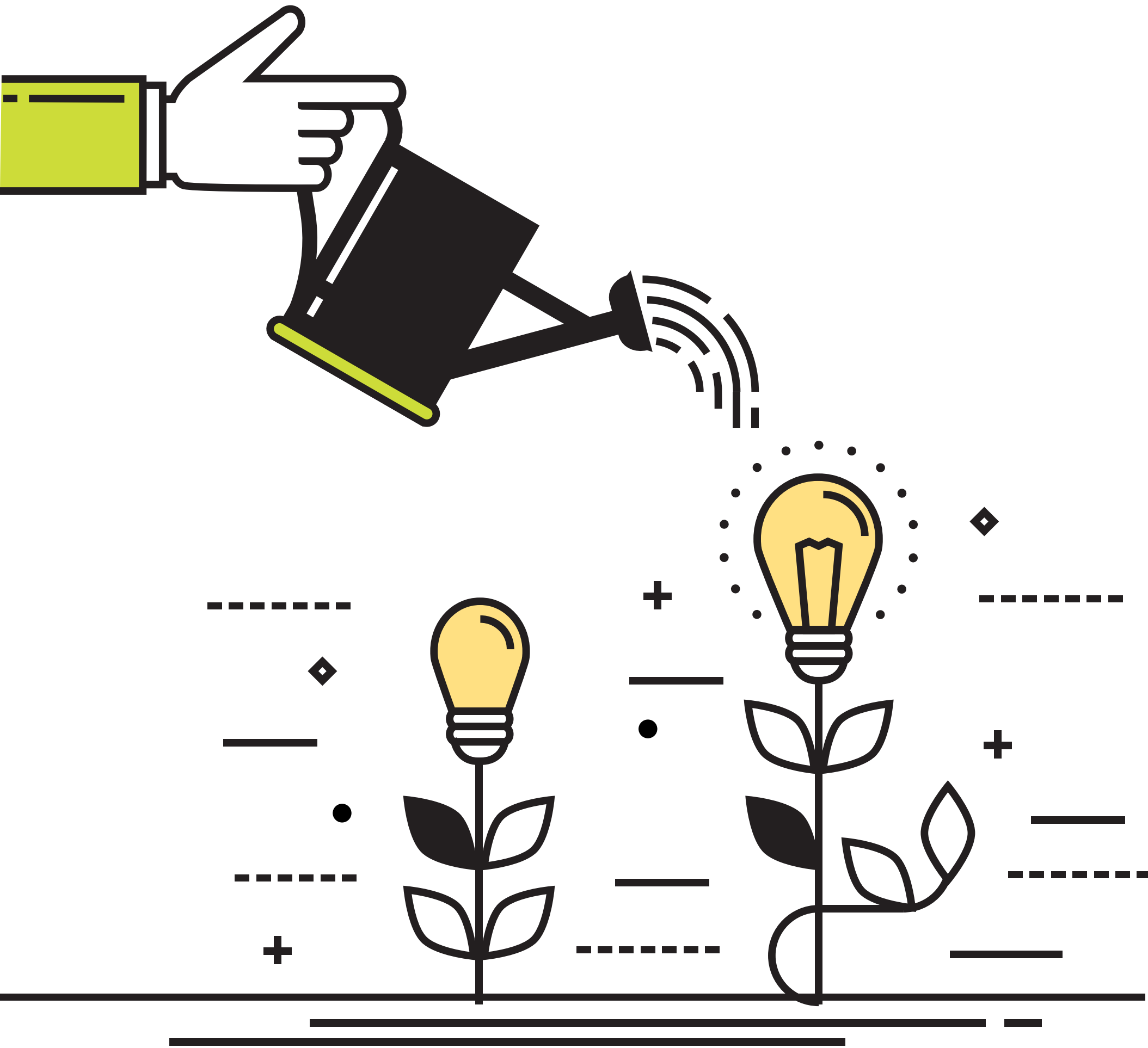
## Seeking \$10M

- \$5M Equity Investment for 22%  
USE: Scaling Operations
- \$5M Debt Financing at 6%/24 Months  
USE: Equipment and Systems





# Return Estimates



## REVENUE

LOW:	Year 1- \$1.9M	Year 2- \$13.3M	Year 3: \$34.5
HIGH:	Year 1: \$2.3M	Year 2: \$30.5M	Year 3: \$71.5

## EXIT STRATEGY

Target Revenue \$70M  
@ Valuation of 5x Revenue = \$350M

## ROI

\$5M Investment = 22% Equity = \$77M



# Why Invest?

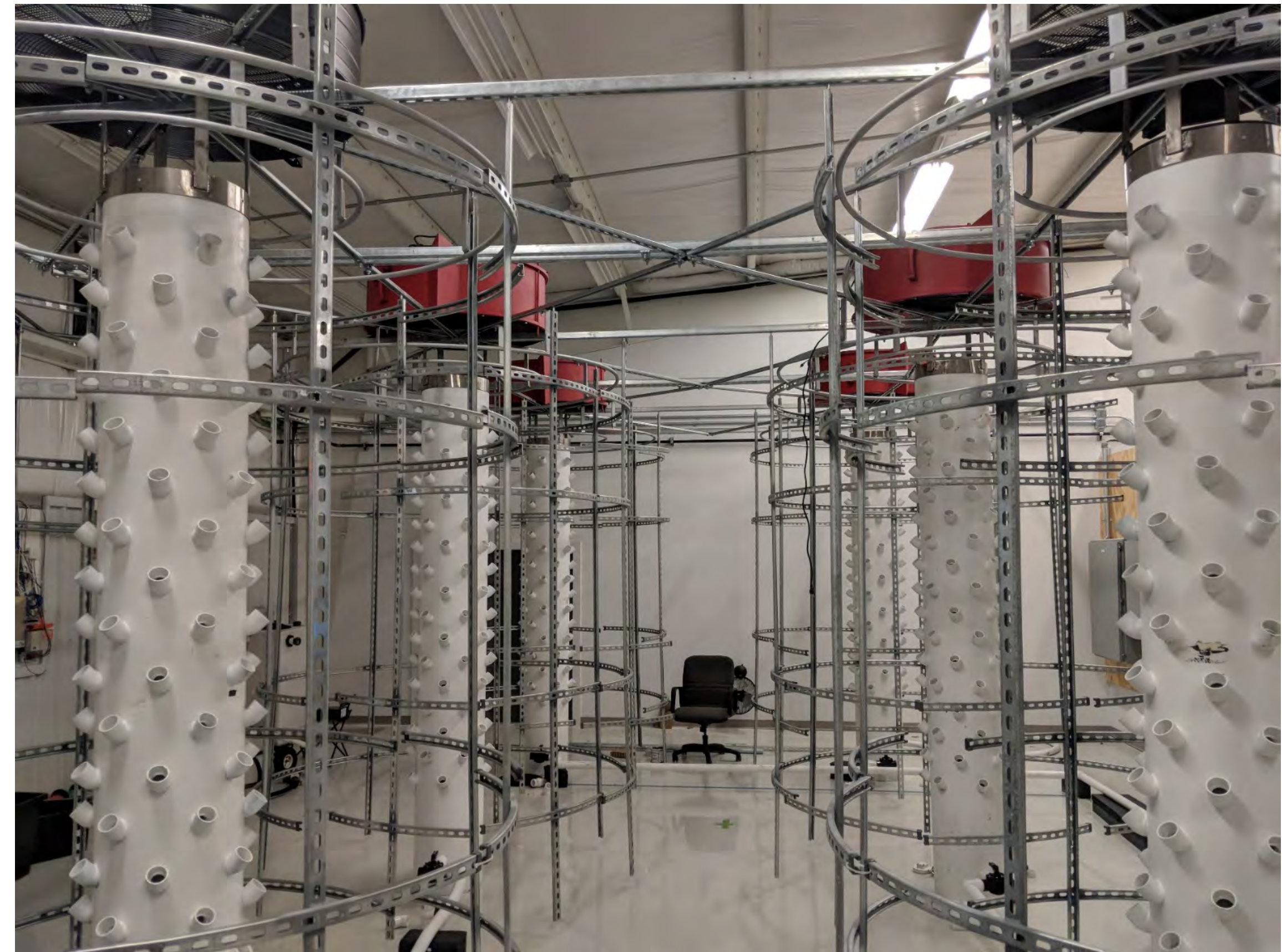
Ready Today, Designed For The Future

- Patent Pending Technology & Software
- Vertical Aeroponic Grow System
- Global Growth
- Seasoned Management Team
- 10x Plus ROI





❖ Asheville North Carolina



Technology-Driven, Medical Grade Cannabis & Hemp Grow System.





**Hyperponic**  
The Future Of Indoor Agriculture.

Technology-Driven, Medical Grade  
Cannabis & Hemp Grow System.

Visit Us: [www.Hyperponic.com](http://www.Hyperponic.com)

Contact: Doug Fyvolent, Founder  
(727) 278-5091  
[Doug@Hyperponic.com](mailto:Doug@Hyperponic.com)

